

## IlSCO® Snapbloc® Modular Connectors

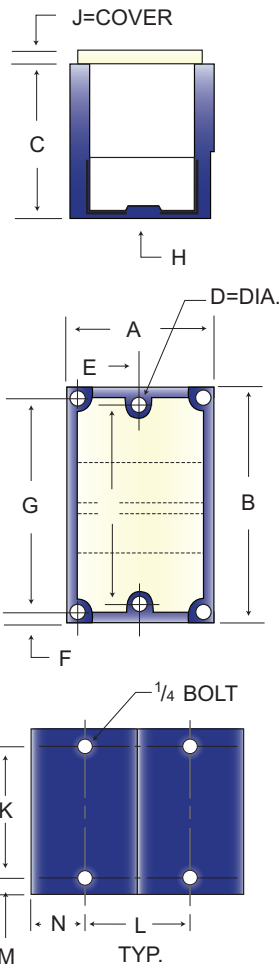
ORDER ONLINE

### Features

- Modular design simplifies stocking. Combine any number of blocks with multiple conductor ranges into the specific configuration for the job.
- Multiple conductor capability: Individual blocks supplied in a variety of configurations with one or two main cable ports and 4, 6, or 12 taps. All are range taking.
- Easy to assemble—unique locking feature allows individual blocks to be combined quickly without special tools
- Suitable for use with both copper and aluminum conductors in any combination
- UL Listed 90°C 600 volts, CSA Certified
- Clear cover permits visual inspection



90°C



### Power Distribution Blocks

| Part Number  | Primary Connector Shape | Primary Wire Range | Primary Openings Per Hole | Primary Hex Size | Secondary Connector Shape | Secondary Wire Range | Secondary Openings Per Hole | Secondary Hex Size | Amperage Rating Per Pole |
|--------------|-------------------------|--------------------|---------------------------|------------------|---------------------------|----------------------|-----------------------------|--------------------|--------------------------|
| LDB-112-350  |                         | 350 MCM - 6        | 1                         | 3/8              |                           | 4 - 14               | 12                          | Slot               | 310                      |
| LDB-112A-350 |                         | 350 MCM - 6        | 1                         | 3/8              |                           | 4 - 14               | 12                          | Slot               | 310                      |
| LDB-16-350   |                         | 350 MCM - 6        | 1                         | 3/8              |                           | 2/0 - 14             | 6                           | 3/16               | 310                      |
| LDB-16-500   |                         | 500 MCM - 4        | 1                         | 3/8              |                           | 2/0 - 14             | 6                           | 3/16               | 380                      |
| LDB-26-350   |                         | 350 MCM - 6        | 2                         | 3/8              |                           | 2/0 - 14             | 6                           | 3/16               | 620                      |
| LDB-212-4/0  |                         | 4/0 - 6            | 2                         | 1/4              |                           | 4 - 14               | 12                          | Slot               | 460                      |
| LDB-212-500  |                         | 500 MCM - 4        | 2                         | 3/8              |                           | 4 - 14               | 12                          | Slot               | 760                      |
| LDB-26-500   |                         | 500 MCM - 4        | 2                         | 3/8              |                           | 2/0 - 14             | 6                           | 3/16               | 760                      |
| LDB-24-500   |                         | 500 MCM - 4        | 2                         | 3/8              |                           | 4/0 - 6              | 4                           | 5/16               | 760                      |
| LDB-11-500   |                         | 500 MCM - 4        | 1                         | 3/8              |                           | 500 MCM - 4          | 1                           | 3/8                | 380                      |
| LDB-22-350   |                         | 350 MCM - 6        | 2                         | 3/8              |                           | 350 MCM - 6          | 2                           | 3/8                | 620                      |
| LDB-22-500   |                         | 500 MCM - 4        | 2                         | 3/8              |                           | 500 MCM - 4          | 2                           | 3/8                | 760                      |

All connectors packaged one (1) per box. All connectors supplied with covers.

### Dimensions

| A | B     | C      | D=Dia    | E     | F    | G     | H   | J=Cover | K    | L    | M   | N    |
|---|-------|--------|----------|-------|------|-------|-----|---------|------|------|-----|------|
| 3 | 5 1/2 | 3 7/16 | .28 Slot | 1 1/2 | 5/16 | 4 7/8 | 1/4 | 1/2     | 4.75 | 2.69 | .38 | 1.50 |